

# BYG

## PATTERN DIGEST



The image features the BYG logo in white text on a black background. To the right of the logo is a circular inset showing a close-up of a large, heavy-duty tire with a deep tread pattern, mounted on a white rim. The tire is part of a yellow piece of heavy machinery, likely a bulldozer or excavator, which is shown in a construction or mining environment with dirt on the ground. The background of the entire page is a light gray with a faint, large-scale pattern of tire treads.

# BYG

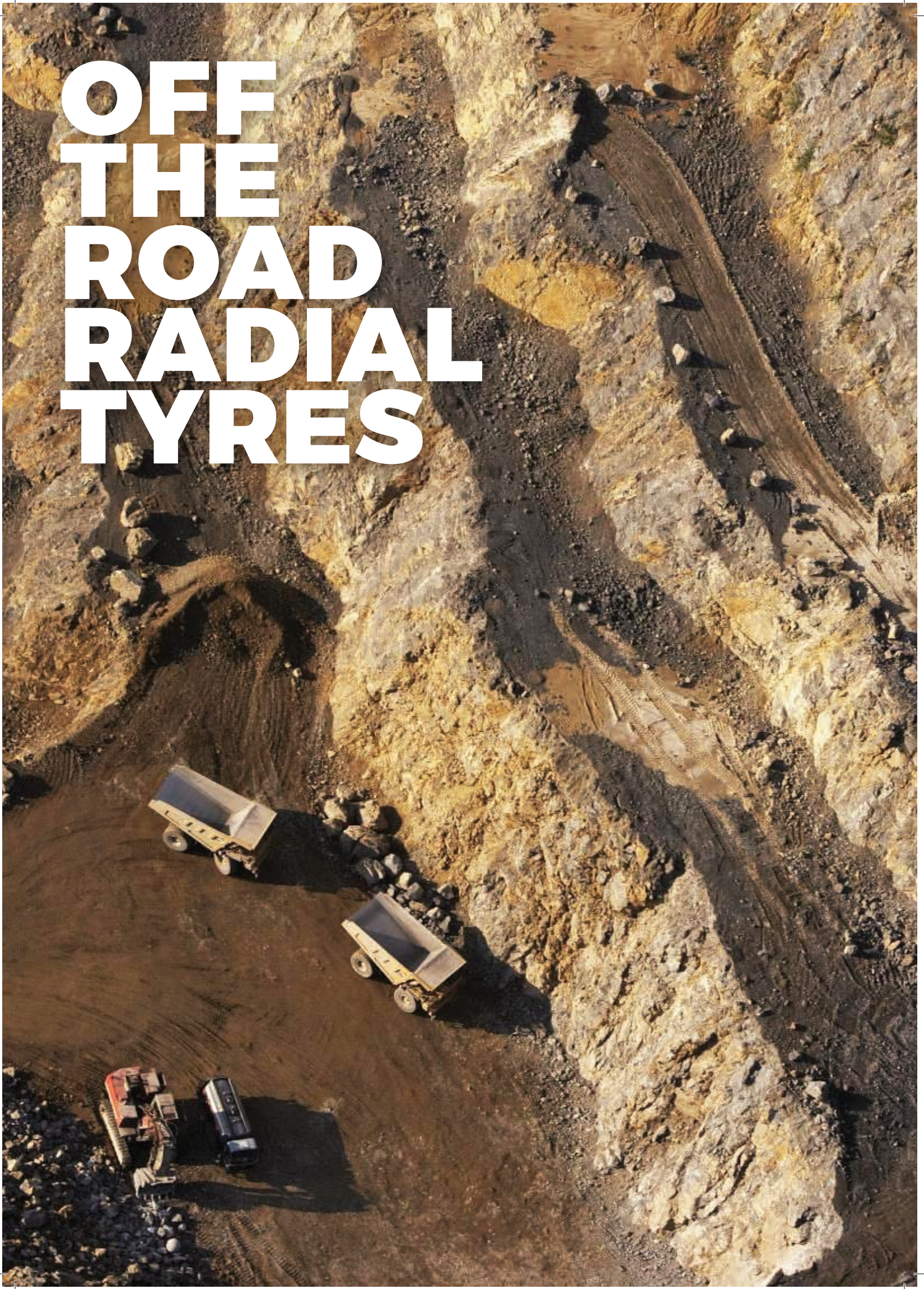
**BYG** has been manufacturing wear parts for heavy earth moving equipment in the construction, mining and quarrying industries for more than 50 years. Since 1967, **BYG** has been following a tradition of quality and service to become a one source solution for all G.E.T needs and a fastener specialist in the replacement parts for OEM products market.

As a part of diversifying, we now introduce you the new product range -BYG TYRES which can perform best in Underground mining, Quarry, Construction, Industrial and On-road applications. Our tyres are carefully engineered and manufactured to meet our commitment to customer's competitive advantages, confidence and build a strong long term relationship. We rely on the latest technologies to design the widest range of patterns and sizes so that you can have most efficient and perfect tires for your needs.

## Higher Quality, Greater Durability And Equipment Performance



# OFF THE ROAD RADIAL TYRES





# Radial OTR

**BYG****BY03***Articulated Dumper**Loaders*

Versatile tread pattern designed for loaders, articulated dumpers and also best suitable for construction, stockpile and loading applications. Provides superior traction and comfort ride. The inner liner with specially designed compound to prevent air leakage.

**E3/L3****BY04***Articulated Dumper**Loaders*

Designed for loaders, articulated dumpers with a special pattern design for outstanding stability and operation comfort. The large pattern plate is good for excellent traction and buoyancy performances ensures long service life.

**E3/L3****BY09***Rigid Dumpers*

Best suitable for underground mining, open pits and quarries because of their deep tread design for severe and rocky surface. Specially designed side wall provides extended protection from cutting. Also ensures excellent combination of traction, stability and comfort ride.

**E4****BY10***Loaders**UST*

Designed for Loaders and Underground Shuttle Trucks because of their extra deep tread pattern. Best performs on conditions like extremely rocky surfaces in open pit, quarries and underground mines. Ensures the long tread life, superior sidewall cut resistance, exceptional casing durability

**L5****BY20***Loaders*

Best suitable for under ground mining and open pits with special directional tread design. Wide footprint provide excellent grip and traction performance with excellent stability and handling performance. Reinforced carcass, Extra deep tread and special tread compound ensures high mileage even on the most abrasive surface.

**L5**



# Radial OTR Specification

BYG

	SIZE	STAR RATING	TYPE	TRA CODE	STANDARD RIM	SECTION WIDTH (mm)	OVERALL DIAMETER (mm)	MAX. LOAD AND INFLATION PRESSURE (Kg/Psi)		TREAD DEPTH (mm)
								50km/h	10km/h	
BY03	20.5R25	★★	TL	E3/L3	17.00/2.0	520	1492	7300/76	11500/94	28
	23.5R25	★★	TL	E3/L3	19.5/2.5	597	1617	9250/76	14500/94	31.5
	26.5R25	★★	TL	E3/L3	22.00/3.0	673	1750	11500/76	18500/94	36
BY04	29.5R25	★★	TL	E4/L4	25.00/3.5	750	1873	14000/76	22400/94	57
BY09	18.00R33	★★	TL	E4	13.00/2.5	500	1875	10900/101	-	49
	24.00R35	★★	TL	E4	17.00/3.5	655	2175	18500/101	-	58
BY10	35/65R33	★★	TL	L5	28.00/3.5	890	2075	-	27250/94	95
BY20	35/65R33	★★★	TL	L5	28.00/3.5	880	2050	-	32500/116	95

BY03



BY04



BY09



BY10

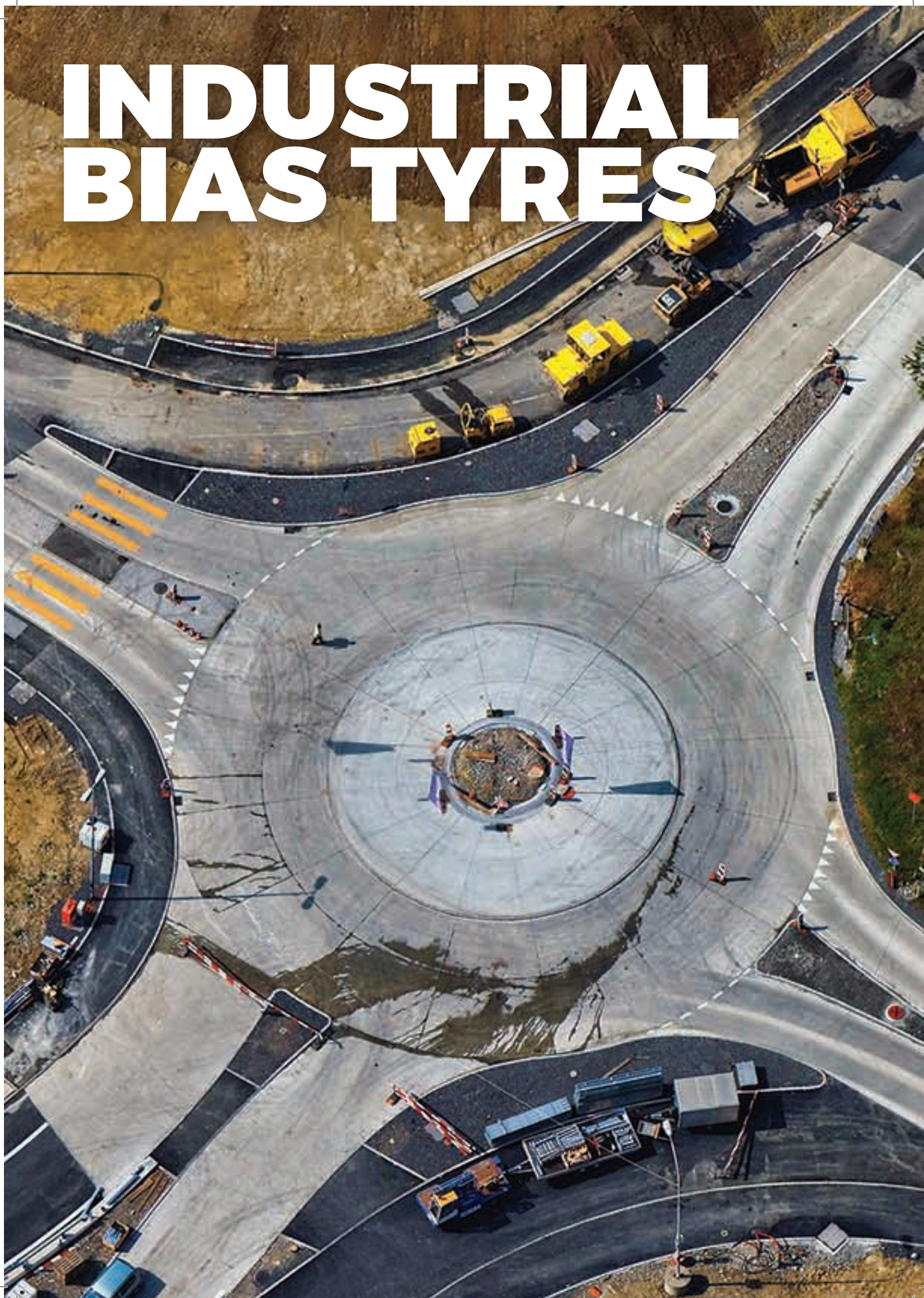


BY20





# INDUSTRIAL BIAS TYRES





## R-4D



Back Hoe Loader



Rear wheel tyres constructed especially for industrial use as well as off-the-road and building site service. Heavy nylon construction and special tread compound are designed to achieve best results to provides more traction and braking power. High mileage even in on-the-road service.

## I-3



Back Hoe Loader



Designed for front backhoe service with a durable tread pattern that gives superior stability and high floatation. This tyre is also designed with advanced resistance to damages such as tearing and chunking. Also, this has reinforced sidewall with curb to protect the tyre against sidewall damage.

## I-3A



Tele Handler



This tire is designed for telescopic handlers and backhoes used in agricultural applications. These tires provide extra traction in soft soil and best performances in the custruction services.



# Industrial OTR Specification

BYG

	SIZE	PLY RATING	RIM WIDTH	SECTION WIDTH	OVERALL DIAMETER	MAX.SPEED	MAX INFLATION PRESSSURE	MAX. LOAD	TYRE TYPE	TREAD DEPTH
				mm	mm	km/h	psi	kg		mm
I-3	12.5/80-18	12	W9	308	987	30	54	1850	TL	20.0
I-3A	15.5/80-24	16	W13	395	1262	30	58	3350	TL	35.0
R-4D	16.9-28	12	15.00	429	1410	40	38	3550	TL	28.0
	18.4-26	12	16.00	467	1426	40	36	4000	TL	29.0

I-3



I-3A



R-4D





# TRUCK & BUS TYRES



# TBR Tyres Specification

**BYG**

	SIZE	PLY RATING	TYPE	LOAD INDEX (SINGLE/DUAL)	SPEED RATING	STANDARD RIM	SECTION WIDTH (mm)	OVERALL DIAMETER (mm)	MAX. LOAD (SINGLE/DUAL) (Kg)	TREAD DEPTH (mm)
ST909	12.00R24	20	TT	160/157	K	8.50	315	1226	4500/4125	15
ST101	325/95R24	22	TT	162/160	K	9.00	325	1228	4750/4500	17

## ST909



Special pattern designed for mix and bad road condition with an excellent performance in irregular wear resistance. It is an all position application tyre and good performance in anti-cracking and tear resistance.



All Possition

## ST101



Highly durable pattern designed for on and off road applications. This is an all position tyre offers enhanced tyre life with superior resistance to irregular wear with a wider tread and groove angles.



All Possition



# TYRE SAFETY

## PRECAUTIONS & MAINTANANCE

This Maintenance Manual is designed for user to aware about the Product, recommended operational practices to get best possible life of Tyre. Since OTR Tyres is a costly product so to avoid unwanted happenings during application, the user should strictly follow the guidelines provided by the manufacturer for longer tyre life.

### MOUNTING AND DEMOUNTING

- Always use new O-ring and Valve core when reassembling.
- Remove the Iron Rust on the rim seat.
- Lubricate O ring and sealing groove with special lubricant.
- In case of unavailability of special lubricant, use soap water, butter or other oil.
- After complete Inflation, Check for the air leakage at seal, Valve base and valve Core.
- Remove Valve Core Completely as it will assure all air is exhausted from tire.
- Double check to be sure all components are properly seated before inflating.

*Note- Valve cap is important to protect valve from dust, water proof and oil. Missing valve cap must be purchased and reequipped.*



### INFLATION PRESSURE

- Always check the inflation pressure before starting work in the morning or the tyre should not be used for more than 4 hours.
- Never bleed air from hot OTR Tyre to Correct buildup of Inflation Pressure.
- After Inflation or replenishment is completed, use soap water or water to block the valve. If Bubbling occur, tighten or adjust the valve cap and close the valve cap.
- Over Inflation and Under inflation should be avoided as it may cause serious damage to the tyre or even a blast may occur, it may cause
  - a. Improper wear.
  - b. Carcass fatigue.
  - c. Poor vehicle handling
  - d. Payload spillage.
  - e. Serious tyre damages.
- The Driver is obliged to visually measure the air pressure when start working and off working.
- The driver should do the visual inspection of the tyre for any damages or cuts. If any, report.
- The Tyre Mechanics should use a barometer to check the tyre pressure weekly.
- The driver should Always avoid to crush any sharp or big stone or any other sharp object during application as it may damage the sidewall and crown area.





**BYG**

